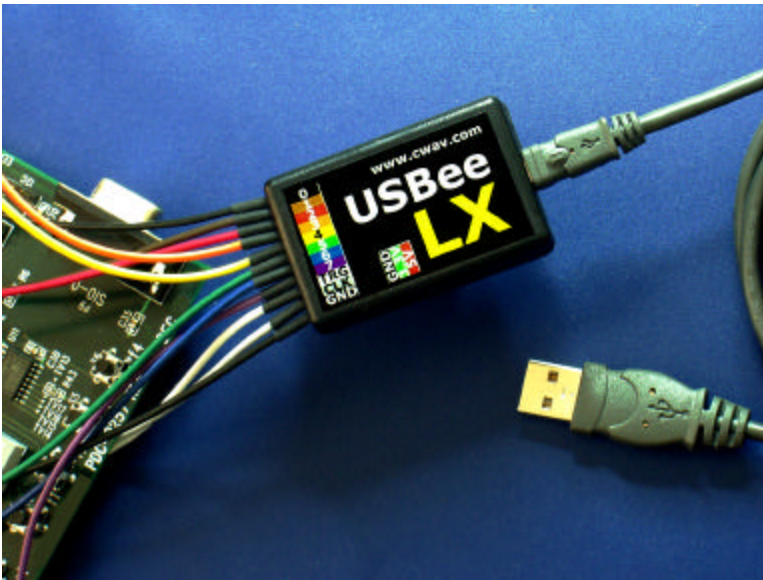


# USBee LX Digital Test Pod

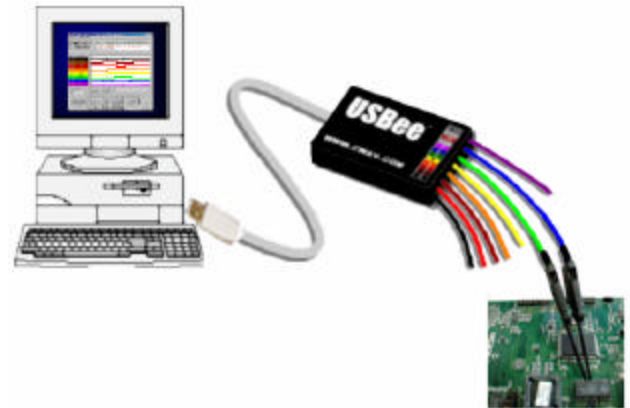


The USBee LX Digital Test Pod combines state of the art design with easy to use PC software to give you a complete digital test bench in a small and affordable package. Connecting to your PC, the USBee LX Digital Test Pod uses the power and speed of the USB bus to capture and control information from your own hardware designs.

The USBee LX is a complete digital test bench in one compact and easy to use pod. Combined with the free, yet powerful, Windows® software the USBee LX is a Logic Analyzer, Signal Generator, Remote Controller, Data Logger, PWM Controller and Frequency Counter. You can also build your own tools using the USBee LX Tool Builder software and Visual Basic or Visual C++.

Control your embedded system, simulate digital inputs and capture your outputs using the USBee Digital Test Pod. Using the USBee is much simpler than writing embedded firmware, and fully configurable.

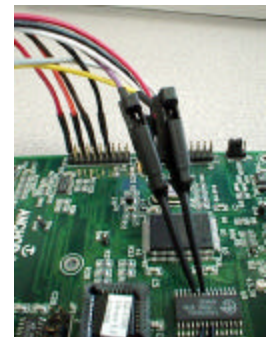
Pod Specifications		USBee
Samples	Maximum Sample Rate	24 Msp/s
	Internal Clocking (Timing Mode)	Yes
	External Clocking (State Mode)	Yes (15 MHz max)
	Sample Rates	1ksp/s to 24Msp/s
	Number of Samples	6144 max
Signals	Number of Channels	8
	Sample Clock Output/Input	Yes
	Channel Output Drive Current	4mA
	Maximum Input Voltage	+5.5V
	Input Low Level	< 0.8V
	Input High Level	> 1.4V
	Output Low Level	< 0.8V
	Output High Level	> 3.0V
	Input Impedance	500KOhm
	Input Capacitance	10pF
	Output Data Skew	< 2ns
	Triggering	Trigger Signals
Trigger Levels		Rising Edge, Falling Edge, High, Low
Settable Trigger Position		Yes (up to 12MHz)
Physical	Temperature Operating	5C ~ 45C (41F ~ 113F)
	Storage	-40C ~ 75C (-40F ~ 167F)
	Dimensions	2.1" x 1.3" x 0.5"
	Test Leads with 0.025" sockets	14 9" leads
	USB Cable Length	6 Feet
	Minigrip Test Clips	14
Power	Power Supply Needed	Power (5V) from USB bus.
	Power Supply Outputs	+3.3V and +5V



**Perfect for your BASIC Stamp® and PIC® system debugging!**

Each USBee LX Digital Test Pod package includes

- USBee LX Universal Serial Bus Pod
- Set of 14 multicolored test leads and high performance miniature test clips
- Getting Started Guide
- USB Cable
- USBee LX Digital Test Pod CD



**Mailing Address:**  
**CWAV**  
**PO Box 892661**  
**Temecula, CA 92589**  
**Phone: (909) 693-3065**  
**Fax: (240)220-8868**  
**General: info@cwav.com**



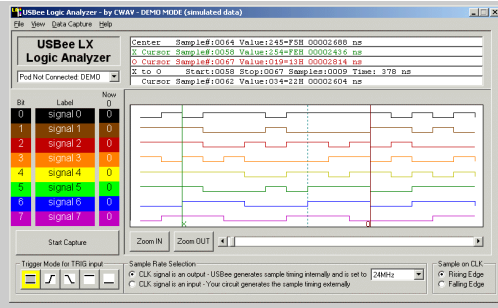
**USB and Digital Design Tools**

www.cwav.com  
 www.ee101.com  
 www.pcllogicanalyzer.com  
 www.usbeepod.com  
 www.usbdesignhelp.com

# USBees LX Digital Test Pod

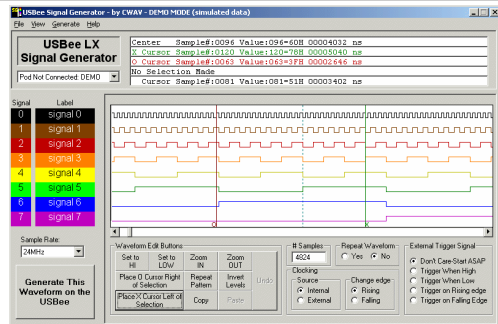
## Logic Analyzer

- Logic Analyzer software runs on your PC
- USB connects the pod to your PC
- Sample Rates (1ksp/s to 24Msp/s)
- 8 channels
- Sample Clock (Output for internal timing, Input for external timing)
- External Trigger signal
- Waveform display (right)
- Listing display
- Save, Open and Print captured data and settings
- Movable cursors for easy measurements
- Output files can be loaded into Signal Generator to "playback" the capture



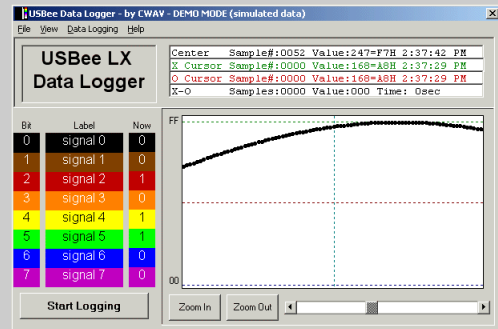
## Signal Generator

- Signal Generator software runs on your PC
- USB connects the pod to your PC
- Sample Rates (1ksp/s to 24Msp/s)
- 8 channels
- External Clocking (15MHz max)
- Output Sample Clock
- External Trigger Input
- Repeat feature to automatically repeat the waveforms
- Waveform display lets you "draw" the signals you want
- Save, Open and Print data and settings
- Movable cursors for easy measurements
- Can input files saved by the Logic Analyzer to "playback" the capture



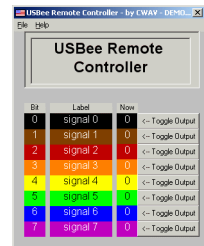
## Data Logger

Use to collect real-time digital signal data and log it to your hard drive. View and print data in a list, waveform, or as a D to A signal. View current state of all signals for easy logic probing.



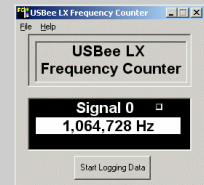
## Remote Controller

Use to control real-time digital signals from the simple Windows interface. Each USBees LX Pod signal becomes an output capable of driving your circuit under test. Change the state of each signal independently with the click of a button.



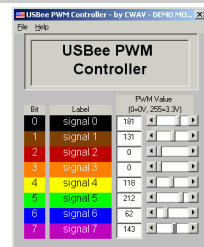
## Frequency Counter

Use this software to measure the frequency of a real-time digital signal (Signal 0) from the simple Windows interface using the USBees LX Test Pod. Measures frequencies of TTL level signals up to 6MHz



## PWM Controller

The USBees LX Digital Test Pod PWM Controller software turns the Pod signals 0 through 7 into Pulse Width Modulated (PWM) output signals.



## USBees Toolbuilder Sourcecode

The USBees LX is configurable and controllable using your own Visual Basic or Visual C++ source code and the USBees Tool Builder projects. This allows you to interface and control your own unique type of data bus or hardware.

```

Sub ExampleTool17()
Dim ReturnVal As Long
Dim Buffer(6194) As Byte

For x = 0 To 6143
    Buffer(x) = x And 255
Next x

ReturnVal = InitializeSDDL(App.Path)
ReturnVal = InitializeSGPod(123)
Cor
If ReturnVal < 1 Then MsgBox "The USBees i
ReturnVal = StartGenerate(123, Buffer(0))
ReturnVal = GenerateScanOut(123)
End Sub
    
```

Getting control into your circuit has never been easier. Now you can generate I/O signals using easy to use Windows programs and the USBees Digital Test Pods. You do not need to get your processor up and running, FPGA alive or ASIC debugged to stimulate your system.

Each USBees Test pod has digital signals that you can connect directly up to your hardware. Each of the signals are then controlled simply by pressing a button on a Windows program to toggle the state, or more complex waveforms can be created using the Signal Generator software. And for the ultimate flexibility, you can write your own software in Visual Basic or C to control each signal as you need.

The USBees Pods come bundled with a host of Windows software that turns the pods into very functional test equipment such as Logic Analyzers, Signal Generators, or Frequency Counters. Also included is the USBees Toolbuilder software that lets you write your own tool as needed. Multiple pods can even be used together to create elaborate control setups.

Sending data back and forth to your PC is EASY using the USBees and the USBees Toolbuilder software. Full libraries of Visual Basic routines are provided that make the data transfers simple. Great for USB prototypes and demos.

The USBees LX Digital Test Pod does not need an external power supply. The USB bus supplies the power to the pod, so your PC supplies the power.

The USBees software can be downloaded for free from [www.cwav.com](http://www.cwav.com) and runs in demonstration mode without a USBees pod connected.

**To place an order or ask a question, Visit your local distributor or call (909) 693-3065 or email [sales@cwav.com](mailto:sales@cwav.com).**

**Mailing Address:**  
**CWAV**  
 PO Box 892661  
 Temecula, CA 92589  
 Phone: (909) 693-3065  
 Fax: (240)220-8868  
 General: [info@cwav.com](mailto:info@cwav.com)

